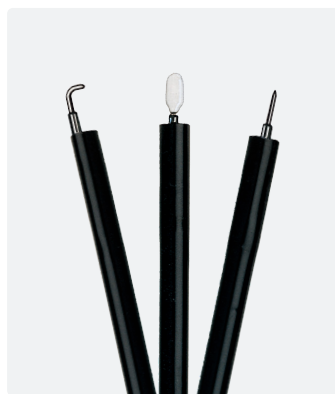




# Laparoscopic Suction & Irrigation Solutions

**Customizable. Comfortable. Eco-friendly.** From fully assembled solutions to customizable trumpet-style handpieces and advanced electro-surgical technologies, CONMED delivers clinical performance with cost-effective flexibility.



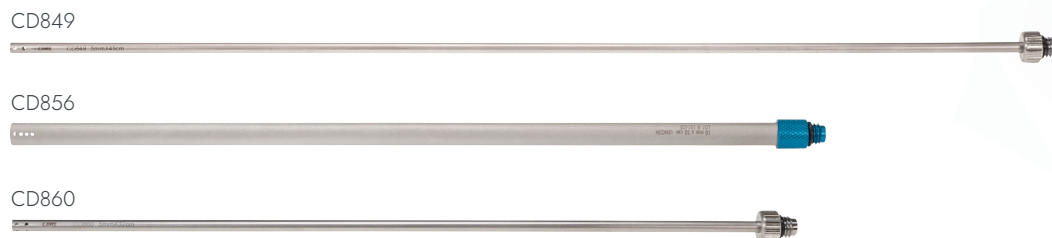
**Sustainable Performance That Saves** - Powered by a single, eco-friendly solution, CONMED's Pressure Infusers are reusable, minimizing environmental impact and lowering operating costs.

# CORE™ Suction/Irrigation System

Laparoscopic Suction/Irrigation equipment designed to provide strength, quality, and optimized workflow. Featuring disposable tubing and handpieces alongside reusable probes for added cost savings.



## CORE® Suction Probes (Reusable)



## Ordering Information

Description	Catalog Number
CORE® Suction Irrigation Handpieces For Single Solution Bags with Probe	CD8185
CORE® Suction Irrigation Handpieces For Single Solution or Dual Bags with Probe	CD8190
CORE® Suction Irrigation Handpieces For Single Solution Bags without Probe	CD8300
CORE® Suction Irrigation Handpieces For Single Solution or Dual Bags without Probe	CD8302
CORE® Trumpet Handpiece Only	CD8450
CORE® Suction Irrigation Reusable Cannulae with Holes 5.00mm x 45.00cm	CD849
CORE® Suction Irrigation Reusable Cannulae with Holes 10.00mm x 32.00cm	CD856
CORE® Suction Irrigation Reusable Cannulae with Holes 5.00mm x 32.00cm	CD860

# Universal Plus®

## Electrosurgical and high volume suction/irrigation systems for surgical endoscopy

### All-In-One Instrument System:

- Cut
- Caulterize
- Dissect
- High Volume Suction
- High Volume Irrigation

#### Straight Handle



A small size pencil grip configuration with color coded E/S buttons or rocker switch activation for precise surgeon control. The trumpet valve S/I buttons contain concave and convex features for easy identification. The tethered S/I tubing and E/S cord eliminate entanglements and are angled downward at 45 degrees, intended to minimize surgeon fatigue.

#### Pistol Grip



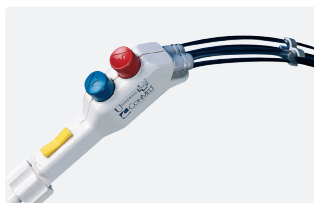
The pistol grip handle is designed to provide surgeons with comfort and control, while the activation buttons are color-coded for seamless interaction. Raised S/I controls enable proportional flow control, the convenient cut/coag buttons offer a satisfying tactile “click,” and the tethered S/I tubing and E/S power cord help prevent entanglement during procedures.

#### Straight Handle Electrosurgical Control Options

Hand Controlled Cut and Coag via E/S Buttons with tactile feel and click Hand Controlled S/I



Hand Controlled Cut and Coag Rocker switch Hand Controlled S/I



Foot Controlled Cut and Coag with Universal Cord Hand Controlled S/I



#### Pistol Grip Electrosurgical Control Options

Hand Controlled Cut and Coag via buttons with tactile feel and click Hand Controlled S/I



Foot Controlled Cut and Coag with Universal Cord Hand Controlled S/I



## 5mm Electrosurgery Electrodes with Suction/Irrigation, Optional Stealth ER Eschar Resistant Coating

Available in 27, 32 and 44cm lengths.



**Spatula**  
60-5272-032, 32cm



**L-Hook**  
60-5272-127, 27cm  
60-5272-132, 32cm



**Spatula with 'Ultra' Coating**  
60-5274-027, 27cm  
60-5274-032, 32cm  
60-5274-044, 44cm



**L-Hook with 'Ultra' Coating**  
60-5274-127, 27cm  
60-5274-132, 32cm  
60-5274-144, 44cm



**Needle with 'Ultra' Coating**  
60-5274-932, 32cm

Extended insulation at the base of each electrode is intended to provide improved patient safety, precise surgical control, and reduce possible collateral desiccation. The lockable tip protector extends beyond the electrode to shield viscera during suctioning.

## Interchangeable Reusable Stainless Steel Suction/Irrigation Cannulas



**5/5mm Sump Cannula**  
60-6002-302, 32cm  
60-6002-309, 44cm

## Interchangeable Disposable Suction/Irrigation Cannulas – Single Use



**10/10mm Sump Cannula**  
60-6001-110, 32cm



**5/5mm Sump Cannula**  
60-6001-203, 32cm  
60-6001-205, 44cm

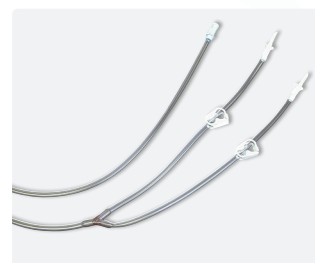
### Unique Extendable Lockable Tip Protector Feature

Allows varied tip exposure during electrosurgery. During S/I, it protects viscera while suctioning and directs flow while irrigating.



### "Dual-Spike" and Standard Suction Connections

All Universal Plus® Control Handles feature the standard push-on connector for suction canister attachment, and "dual-spike" irrigation line for quick bag changes or dual pump set-ups.



## Ordering Information

Description	Catalog Number
Universal Plus® 5.00mm X 32.00cm Laparoscopic Spatula Electrode with Suction Irrigation Lumen	60-5272-032
Universal Plus® 5.00mm X 27.00cm Laparoscopic "L" Hook Electrode with Suction Irrigation Lumen	60-5272-127
Universal Plus® 5.00mm X 32.00cm Laparoscopic "L" Hook Electrode with Suction Irrigation Lumen	60-5272-132
Universal Plus® 5.00mm X 27.00cm Laparoscopic Spatula Electrodes with "Ultra" Coating Suction Irrigation Lumen	60-5274-027
Universal Plus® 5.00mm X 32.00cm Laparoscopic Spatula Electrodes with "Ultra" Coating Suction Irrigation Lumen	60-5274-032
Universal Plus® 5.00mm X 44.00cm Laparoscopic Spatula Electrodes with "Ultra" Coating Suction Irrigation Lumen	60-5274-044
Universal Plus® 5.00mm X 27.00cm Laparoscopic "L" Hook Electrodes with "Ultra" Coating Suction Irrigation Lumen	60-5274-127
Universal Plus® 5.00mm X 32.00cm Laparoscopic "L" Hook Electrodes with "Ultra" Coating Suction Irrigation Lumen	60-5274-132
Universal Plus® 5.00mm X 44.00cm Laparoscopic "L" Hook Electrodes with "Ultra" Coating Suction Irrigation Lumen	60-5274-144
Universal Plus® 5.00mm X 32.00cm Laparoscopic Needle Electrodes with "Ultra" Coating Suction Irrigation Lumen	60-5274-932
Universal Plus® 10.00mm Sump Cannula (With Side Holes) Suction Irrigation Cannulae	60-6001-110
Universal Plus® 5mm x 32cm Sump Cannula (With Side Holes) Suction Irrigation Cannulae	60-6001-203
Universal Plus® 5mm x 44.00cm Sump Cannula (With Side Holes) Suction Irrigation Cannulae	60-6001-205
Universal Plus® 5.00mm X 32.00cm Stainless Steel Cannula Suction Irrigation Cannulae	60-6002-302
Universal Plus® 5.00mm X 44.00cm Stainless Steel Cannula Suction Irrigation Cannulae	60-6002-309
Universal Plus® Pistol Grip Foot Control E/S, Hand Control S/I	60-6010-000
Universal Plus® Straight Handle Foot Control E/S, Hand Control S/I	60-6010-001
Universal Plus® Pistol Grip, Hand Control E/S (Buttons) and S/I	60-6010-002
Universal Plus® Straight Handle Hand Control E/S (Button Switch), Hand Control S/I	60-6010-003
Universal Plus® Straight Handle Hand Control E/S (Rocker Switch), Hand Control S/I	60-6010-005
Universal Plus® Pistol Grip, Hand Control S/I	60-6020-100
Universal Plus® Straight Handle, Hand Control S/I	60-6020-115

# Pressure Infusor Irrigation Pumps



## 1-Liter Pressure Infusor Irrigation Pump:

- Takes standard irrigation bag, 500–1000ml
- IV pole mountable (0.75"–1.5")
- Locking pressure adjustment knob
- Comes with 12' of gas source tubing



## Dual 1-Liter Pressure Infusor Irrigation Pump

- Takes two bags, 500–1000ml, great for irrigators with dual spikes
- IV pole mountable (0.75"–1.5")
- Individual locking pressure adjustment knob for each bag chamber
- Comes with 12' of gas source tubing



## 3-Liter Pressure Infusor Irrigation Pump

- Most versatile, takes single bag, 500–3000ml
- IV pole mountable (0.75"–1.5")
- Locking pressure adjustment knob
- Comes with 12' of gas source tubing

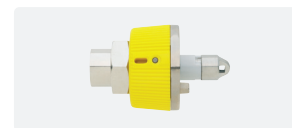


## Power Pack, Pressure Infusor Irrigation Pump

- AC powered air compressor for 270178, 270123, and 270165 Infusor Irrigation Pumps
- 110V compatible
- IV pole mountable (0.75"–1.5")
- UL recognized motor

## Ordering Information

Description	Catalog Number
1-Liter Pressure Infusor Irrigation Pump	270178
Dual 1-Liter Pressure Infusor Irrigation Pump	270123
3-Liter Pressure Infusor Irrigation Pump	270165
Power Pack, Infusor Pump Compressor	270179
Gas Source Quick Connect Coupler, Ohmeda, Air	CD984A



Gas Source Quick Connect Coupler, Ohmeda, Air

