

Consistently produces strong, secure seals in an average of <1 second.^{1,3}



Thyroidectomy

A small surgical field requires a highly precise device to safely dissect, seal and divide the thyroid. **The CoolSeal Reveal** device was tailor-made for precision in a thyroidectomy procedure and offers the following benefits to the surgeon:

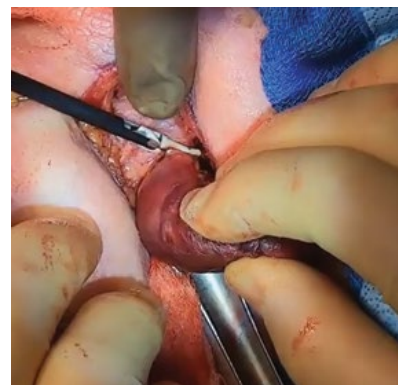
Maximized visualization and access. Unique, shafted design and fine jaws are designed for the challenges of tight surgical spaces.

Precise performance. Thin, curved, dual-action jaws paired with an intuitive hemostat design gives surgeons full control when dissecting, sealing, and dividing around the thyroid.

Move quickly and efficiently. Seals in less than a second on average,¹ allowing for quick dissection around the thyroid lobes.

Safe, consistent vascular control. Creates secure, reliable seals across a range of notable and sometimes hidden thyroid arteries, veins, and tissue bundles up to and including 6 mm in diameter.³

Avoid inadvertent thermal damage. Less than 1 mm thermal spread and cool outer jaws help avoid unintended impact to nerves and surrounding structures.^{4,5,6,*}



In the images above, the **CoolSeal Reveal** device dissects, seals, and divides vessels surrounding the right thyroid lobe and isthmus during a thyroid lobectomy.



Elevate your expectations with the CoolSeal® suite of products, and experience vessel sealing reinvented.

Specifications

	Catalogue No.	Shaft Length	Shaft Diameter	Jaw Length	Jaw Design
CoolSeal Reveal	CSL-RV105-10	10 cm	5 mm	12 mm	Maryland
CoolSeal Trinity	CSL-TR105-30	30 cm	5 mm	20 mm	Maryland
	CSL-TR105-37	37 cm	5 mm	20 mm	Maryland
	CSL-TR105-44	44 cm	5 mm	20 mm	Maryland
CoolSeal Mini	CSL-MN103-20	20 cm	3 mm	10 mm	Maryland
CoolSeal Generator	CSL-200-50	—	—	—	—

References

1 Internal Report 16451_1. Average Seal Time 2 510(k) K203640 3 Internal Report 16339_1 4 Internal Report 16375_2. Average Thermal Spread.
 5 Internal Report 16457_1 6 Internal Report BOLD-2001 * Critical structures tested include bowel and vasculature. Keep 2-3 mm away from unintended thermally sensitive structures.



Important Safety Information

The CoolSeal® Reveal open sealer/divider/dissector is a bipolar electrocautery instrument intended for use in open surgical procedures in adults and pediatrics where ligation and division of vessels, tissue bundles, and lymphatics is desired. The CoolSeal® Reveal open sealer/divider/dissector can be used on vessels (arteries and veins) up to and including 6 mm in diameter. It is indicated for use in general surgery and in such surgical specialties as urologic, thoracic, plastic, and reconstructive. Procedures may include but are not limited to, bowel resections, gall bladder procedures, Nissen fundoplication, and adhesiolysis.

The CoolSeal® Reveal open sealer/divider/dissector is also indicated for open ENT procedures in adults (thyroidectomy, radical neck dissection, and parotidectomy) for ligation and division of vessels, lymphatics and tissue bundles 2-3 mm away from unintended thermally-sensitive structures such as nerves and parathyroid glands.

Do not use the CoolSeal® Reveal open sealer/divider/dissector for tubal sterilization or tubal coagulation for sterilization procedures.

For further information related to warnings, cautions, and directions for use, please consult the Instructions For Use.

30176/B © 2022 Hologic, Inc. All Rights Reserved. Hologic, CoolSeal, The Science of Sure and associated logos are trademarks and/or registered trademarks of Hologic, Inc. and/or its subsidiaries in the United States and/or other countries. All CoolSeal products are manufactured by Bolder Surgical, LLC, a subsidiary of Hologic, Inc.